

ECM update – NSW User group

Ross Humphreys

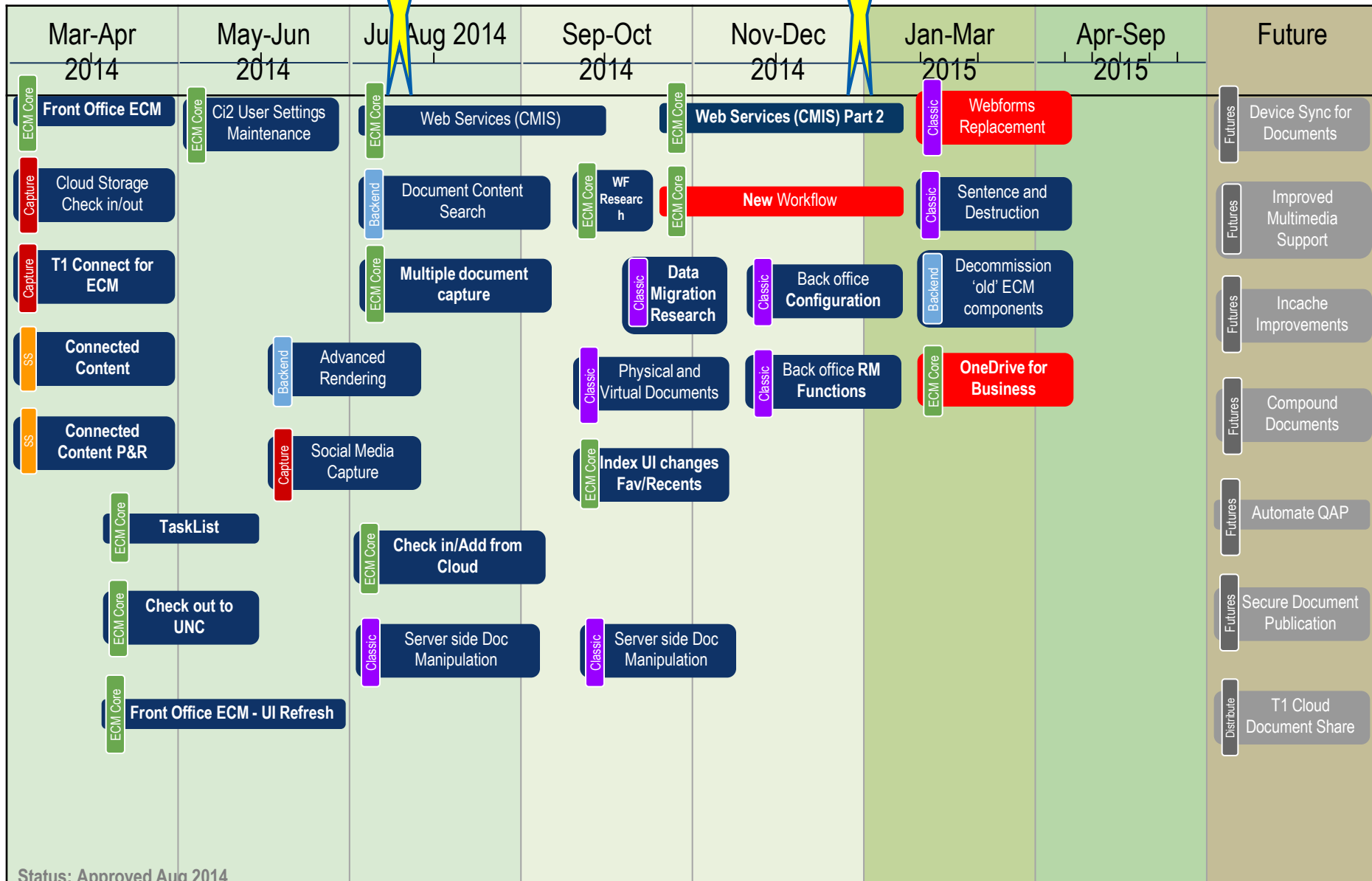
Ross_Humphreys@TechnologyOneCorp.com

23 September 2014 Commercial in confidence

- ECM 4.03 is in Production at
 - Noosa Council includes Connected Content (Sept 2014)
 - Palerang Council
 - Sunshine Coast (currently only deploying Legacy)
 - Kalgoorlie Boulder (currently only deploying Legacy)
- There are a number of sites with ECM 4.03 in Test
 - South Waikato, New Plymouth
 - Gosford City Council
 - Yarra Ranges , City of Bendigo
 - City of Launceston
 - City of Belmont,, City of Fremantle
 - Central Highlands Regional Council
- EA site for Oracle ECM4.03 Federation University

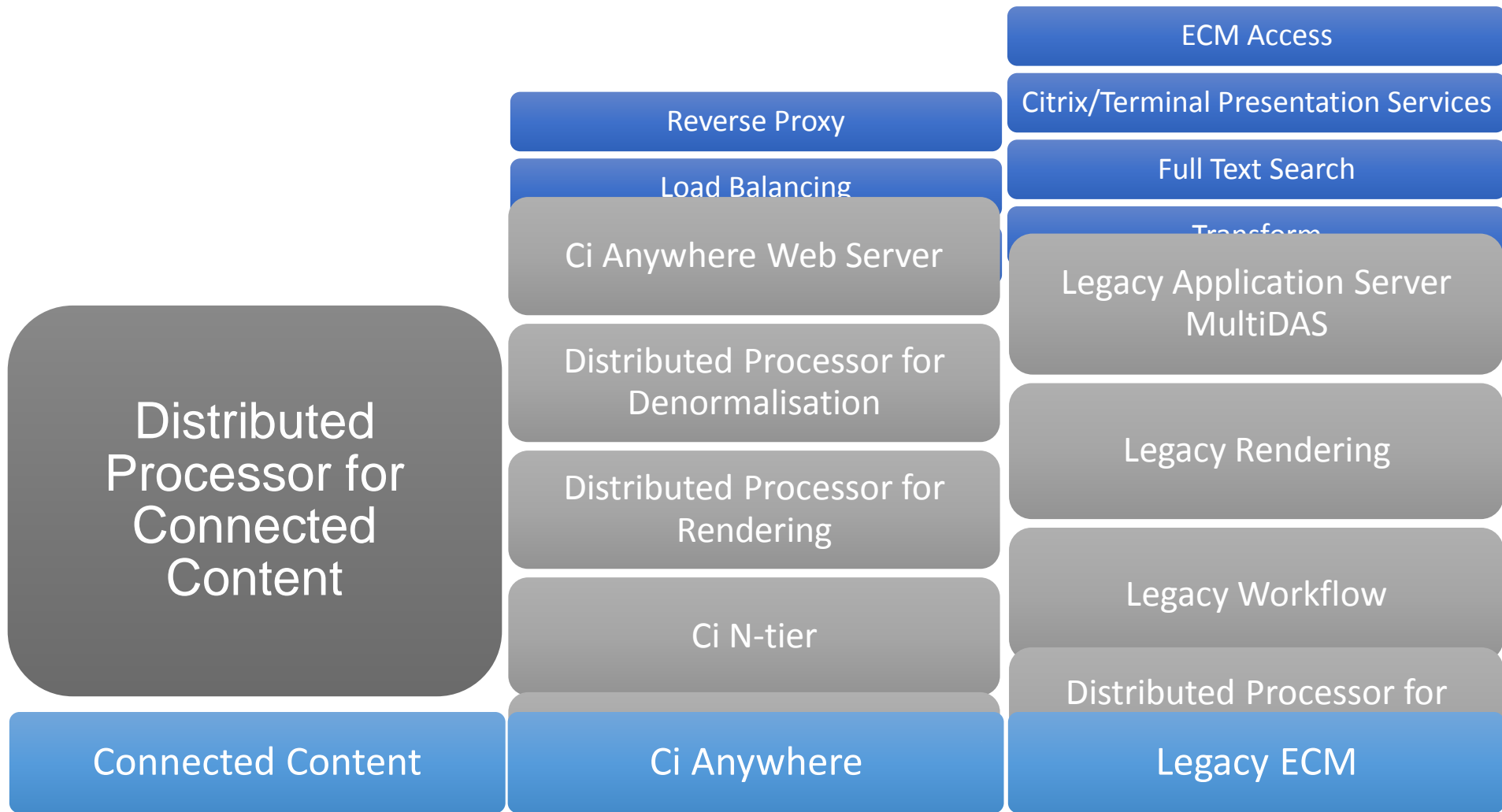
- The following Road Map is provided as a guide to software development priorities for TechnologyOne ECM
- The Road Map is subject to change
- Project priorities and expected delivery dates will often change

ECM Roadmap - R&D Work Schedule



- Coming to an Enterprise Apps Store near you may include
 - Relate documents
 - Save searches
 - Send documents – single PDF , Multiple PDF in ZIP file, Originals in ZIP
 - Add “+” allows to direct to Google drive , One drive , My files plus add new index if allowed
 - System admin class enquiry ,Mime Type enquiry , Rendering queue, ECM configuration (more functions added)
 - Search fields
 - Use of ? For index and doc fields to select /query
 - Return all indices
 - X in search to remove criteria
 - Multi-document select and register using common index , QAP etc

- Upgrade Process
- Each site is individual based on its configuration set up and use of ECM
 - Pre quote discussion – identify component services
 - Scoping for technical and application functions
 - Test upgrade
 - Configuration questions , outcomes and use,
 - Legacy sign off then Ci Anywhere load and sign off
 - Training
 - Production upgrade



- A ECM release 3.08 site has a lot of work to be done eg QAP's, client deployment if Legacy used then need to clean up old client installs
- Supported Platforms documents for Legacy and the CiA Prerequisites document for CiA, These documents are available now on the Support web site.

Supported Platforms

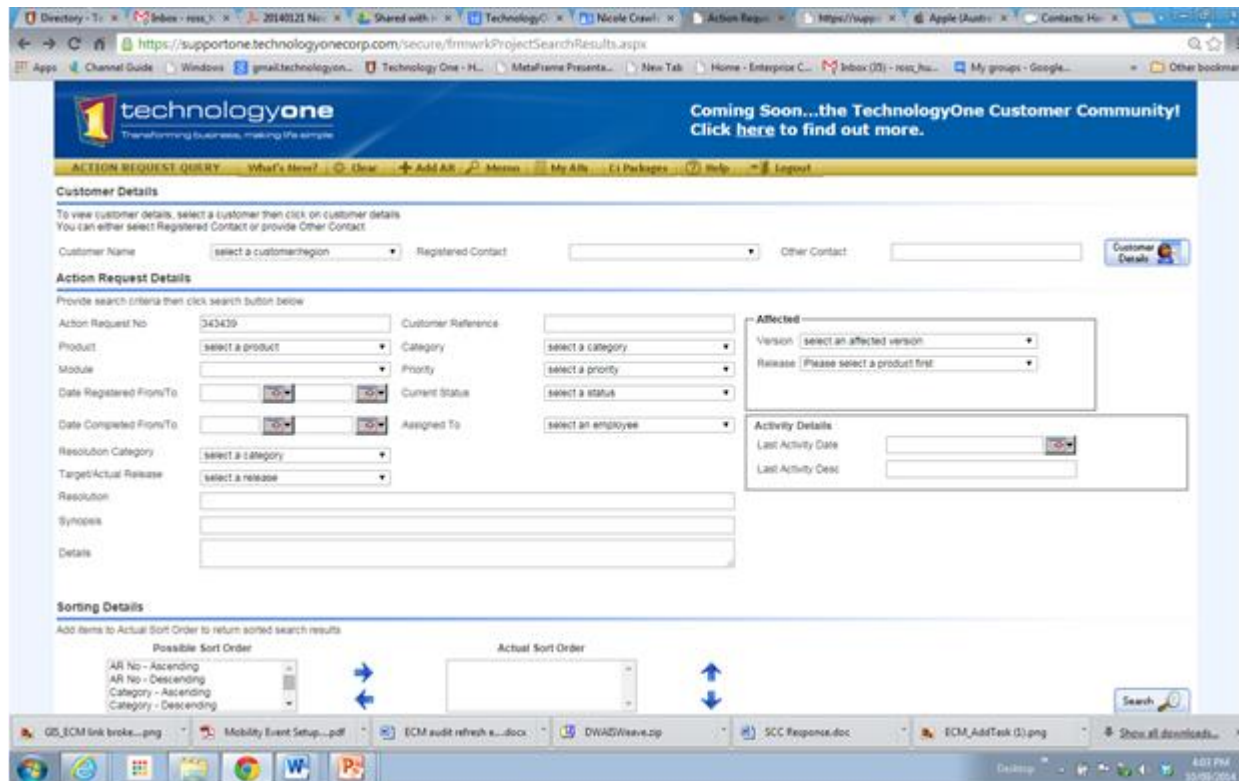
Click [here](#) to find information on the Base Requirements for TechnologyOne Ci Anywhere products.

Click [here](#) to find information on Supported Platforms for TechnologyOne Ci products.

- Integration
 - ECM / P&R – Connected Content
 - Pathway – need Gencon
 - Authority – existing Transform

- CMIS (Content management Interoperability Services)

- New Support System is coming – Have you clicked on the link to find out more information



TechnologyOne Customer Community, a place where our customers can:

- Create and manage support cases
- Suggest product enhancement ideas
- Collaborate with other customers and our people
- Find answers to questions

Key transitional activities planned are as follows:

- Customer invitations for 'TechnologyOne Customer Community Overview' webinars
- Early adopter program invitations
- Customer invitations for 'How to register and set up your profile' webinars
- Internal roll out for Support, Consulting and R&D
- TechnologyOne Customer Community go live

- EOI email from Townsville
- May 2015

